



# HIDDEN FIGURES IN ISRAEL

Following UN Recommendations  
for a Gender-Sensitive Approach to the Corona Crisis

Status Report #2, October 2020



The UN cited several areas in which public policy requires gender-sensitivity if it is to cope adequately with the corona crisis. Here's how they pertain to Israel:

**1**  
Violence  
against Women

**2**  
Employment

**3**  
Care for Home  
and Family

**4**  
Poverty and  
Housing

**5**  
Lone Mothers

**6**  
Older Women

**7**  
Medical  
Professions

**8**  
Health insurance  
and health services

**9**  
Education

**10**  
Pregnancy and  
birth services

**+1**  
Only 10 subjects  
pertain to the UN  
And we add:  
Decision-making  
Power

# 1 Violence against Women

Women are subject to physical, economic and sexual violence within the family.

- In May-July 2020, 4,700 police files were opened in Israel on family violence cases, compared with 4,050 during the same period in 2019;
- Between March and August 2020, 14 Israeli women were murdered by their spouses or other family members.



In May-July 2020

**4,700**

police files were  
opened in Israel on  
family violence cases

# 2

## Employment

Women are employed in more part-time work and precarious jobs, and earn less than men. These gaps widen during crises.

### Vacation without pay

The Government Employment office reports that since the start of Israel's second lockdown (September 19, 2020), 94,000 job seekers re-registered as sent home on vacation without pay, 70% of them women.



### Informal economy

Women are over-represented in the informal economy, a category which includes home cleaners, nannies, persons devoid of residency status, refugees and sex workers. They have limited or no access to social insurance, and the economic losses they incur expose them to the dangers of homelessness and hunger.



# 3

## Care for Home and Family

In June 2020, women did 61% of housework in Israeli two-parent families and 64% of childcare work; Men failed to increase their share of these tasks.



Women did  
**61%**  
of housework



Women did  
**64%**  
of childcare work

# 4

## Poverty and Housing

Poor women are in greater risk than others in times of crisis:

Women constitute

**54%**

of poor people  
in Israel



Women constitute

**62.5%**

of Israelis receiving  
rent subsidies



Lone mothers are

**47%**

of Israelis residing in  
public housing



5

## Lone Mothers



Lone mothers are especially vulnerable to poverty:

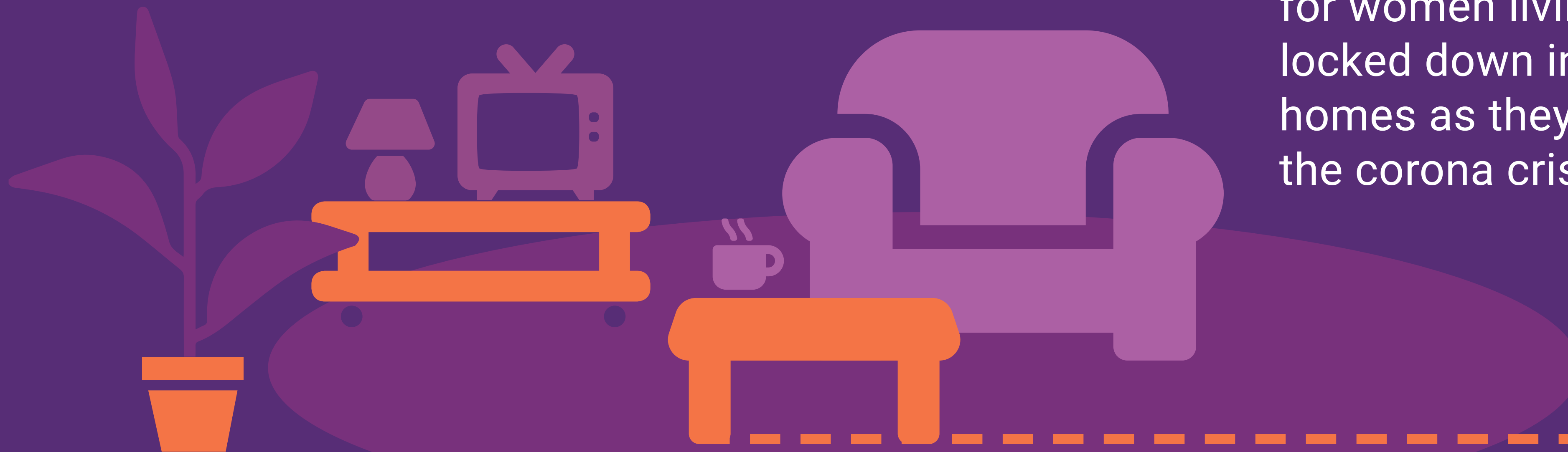


Among one-parent families in Israel (84% of which were headed by women in 2018), 26% were poor prior to the corona crisis; 30% are now poor.

6

## Older Women

- Some 1/3 of women aged 65 and over live alone, compared with 12% of men
- Public policy needs to make special provisions for women living alone, locked down in their homes as they are during the corona crisis





7

# Medical Professions



Women constitute 72% of health care workers and the majority of essential workers. They are in more danger than others of contracting Covid-19 due to exposure to people infected with the virus.

 Women  Men

Occupational therapists

96%

Social workers

90%

Nurses

89%

Physiotherapists

75%

Physicians

43%

# 8

## Health insurance and health services



While Israel boasts a National Health Insurance Law that covers all residents, **some persons have limited or no access to medications and medical treatment**, among them persons lacking residency status and migrant workers.

9

## Education



When school schedules are disrupted, mostly women forego or reduce paid work to care for children and assist them with long-distance learning

10

## Pregnancy and birth services



During health crises, the corona epidemic being a prime example, these women-centered services are reduced due to limited health care resources.

# Decision-making Power

+1

To all of the above, we add that women's influence in decision-making positions in Israel continues to be limited:

Women are no more than

- 21% of Cabinet ministers
- 27.5% of legislators
- 17% of hospital directors-general
- 20% of the national team on the corona crisis, increased to 61% after women's protest and court petition!

This needs to change!

Israel needs more women's input to cope with the corona crisis.



Written by: Dr. Yael Hasson, Hadass Ben Eliyahu, Dr. Hagar Tzameret

Design: Lital Biton



THE HADASSAH  
FOUNDATION®

FRIEDRICH  
EBERT  
STIFTUNG



יודעת  
she knows • هي تعرف

AdvaCenter مرکز أدفا  
מרכז אדוה  
מידע על שוויון וצדק חברתי בישראל

## SOURCES

- UNWOMEN - COVID-19: Emerging gender data and why it matters, June 2020.  
<https://data.unwomen.org/resources/covid-19-emerging-gender-data-and-why-it-matters>
- Israel Police, Information about domestic violence toward women and children. Data received on September 25, 2020.
- Her Memorial Facebook page: <https://www.facebook.com/HerMemorial>
- Government Employment Administration. 2020. Data received on September 24, 2020
- Hertzberg-Druker, Efrat, Meir Yaish and Tali Crystal .2020. The consequences of the coronavirus pandemic for inequality. University of Haifa.
- Calculations made by authors based on the National Insurance Poverty Report: 2018.  
[https://www.btl.gov.il/Publications/oni\\_report/Documents/oni2018.pdf](https://www.btl.gov.il/Publications/oni_report/Documents/oni2018.pdf)
- Ministry of Construction and Housing, 2019 Budget Proposal.
- Endevel, Miri, Oren Heller and Lahav Karadi. 2020. Impact of the recession by the corona crisis on the equality of living, poverty and inequality. Discussion Paper 133. The National Insurance Institute of Israel (Hebrew).
- Affordable Housing Center. November 2017. "Urban Renewal and the Elderly".
- Ministry of Health. 2018. "Report on Health Care Personnel." (Hebrew)
- Finance Ministry, Salary and Employment Agreement Division. Public service and security systems report for 2018 (Hebrew).
- Ministry of Health Database: <https://institutions.health.gov.il/institutions/01>.